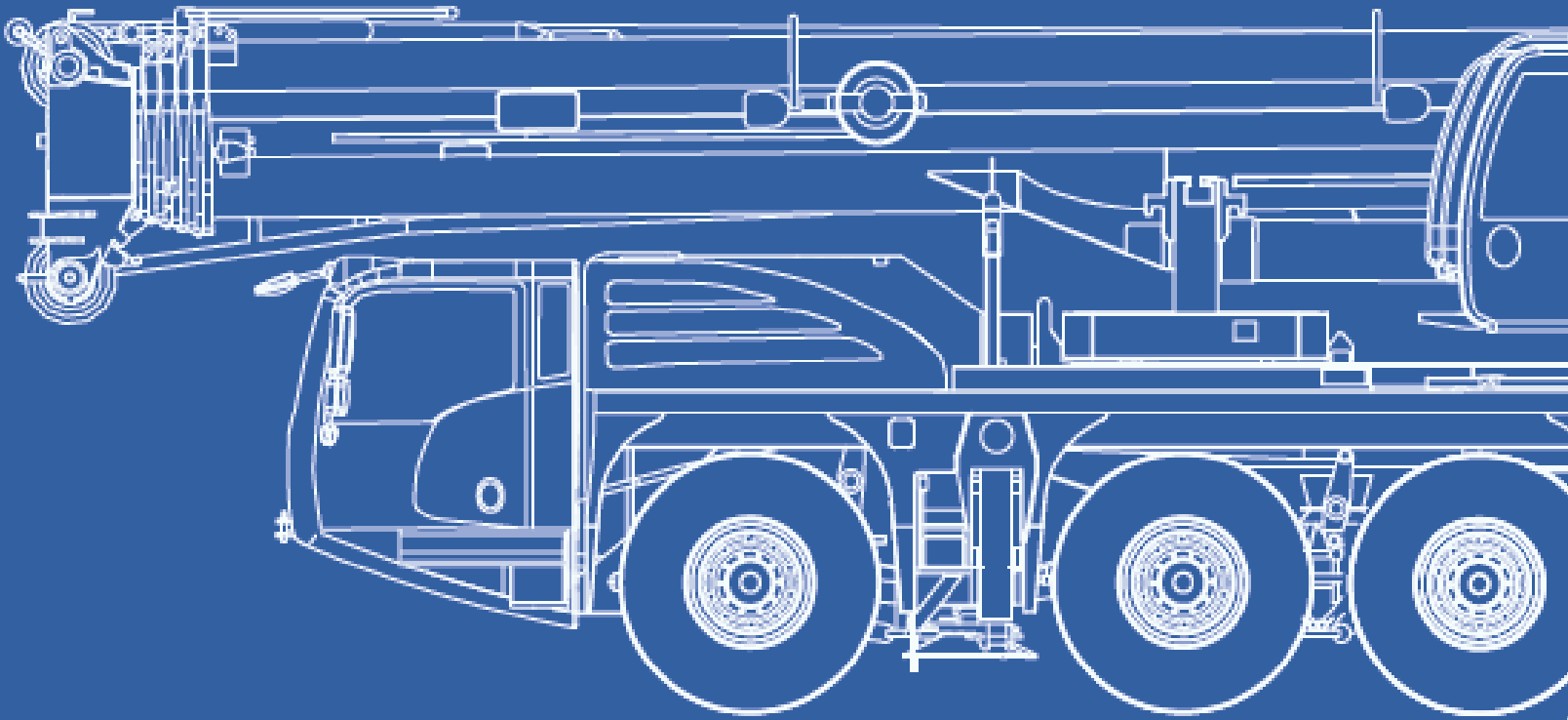




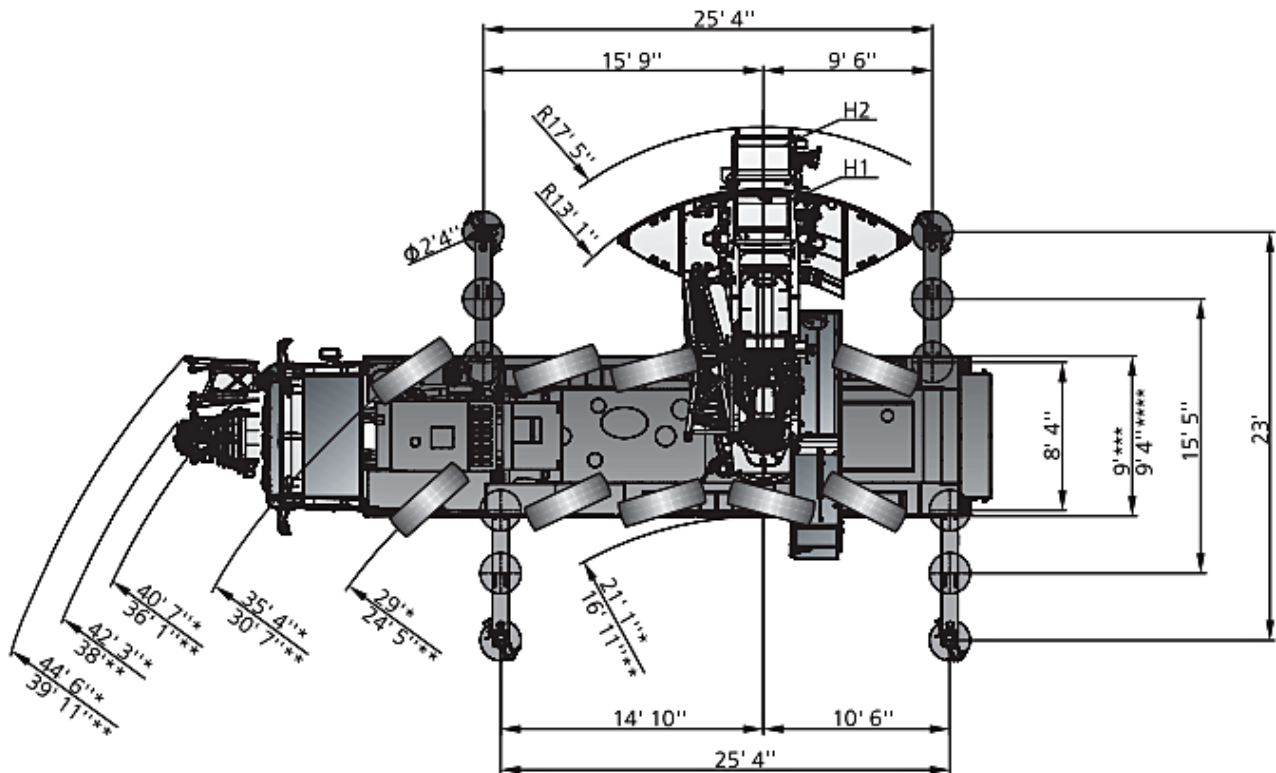
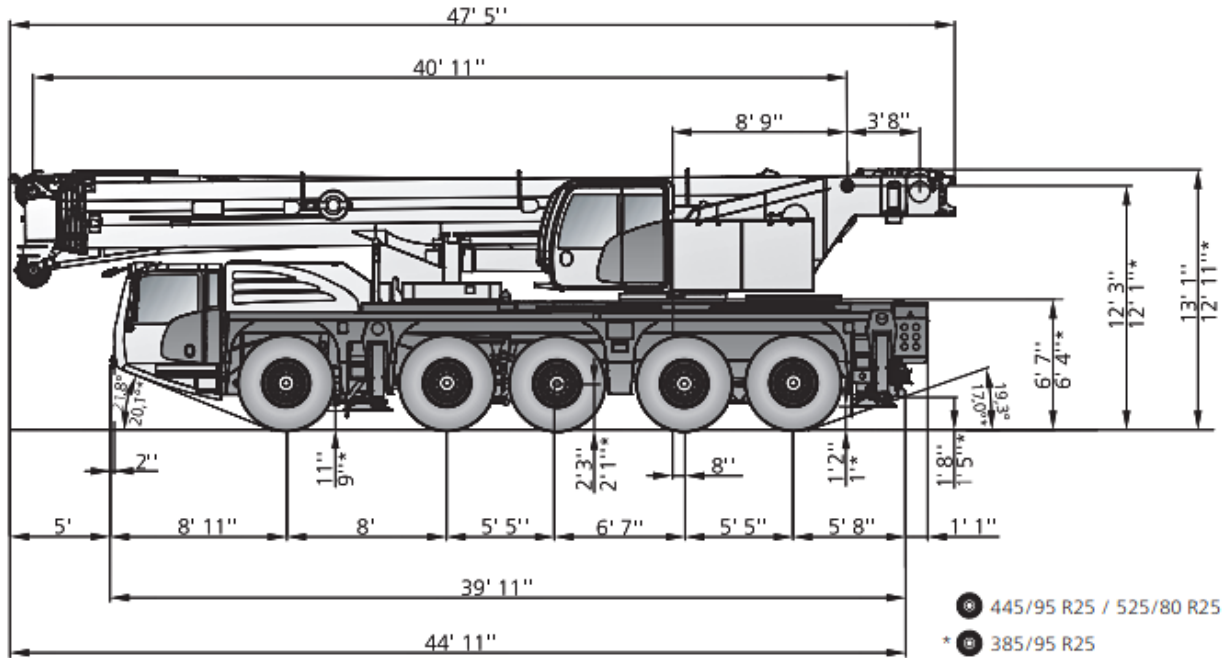
140 UST
CAPACITY CLASS



AC 130-5
ALL TERRAIN CRANE

DIMENSIONS

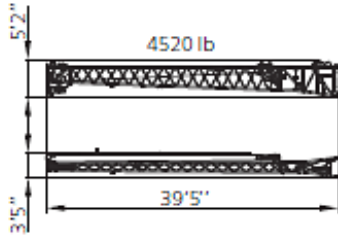
HA = Main Boom HAV = Folding Swing-away Jib HAV-VA= Variable Extension with Jib MS= Runner



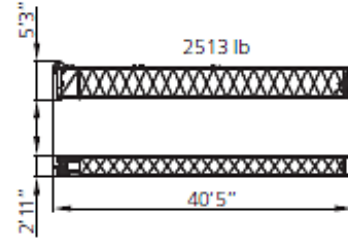
EQUIPMENT

HA = Main Boom HAV = Folding Swing-away Jib HAV-VA= Variable Extension with Jib MS= Runner

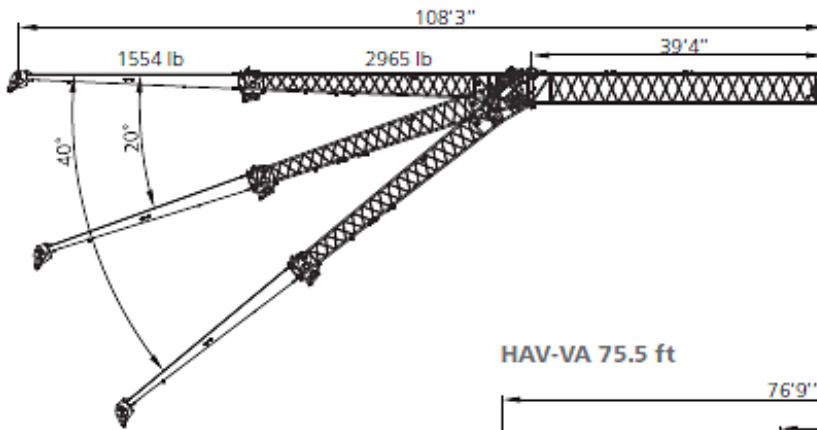
HAV / HAV-VA



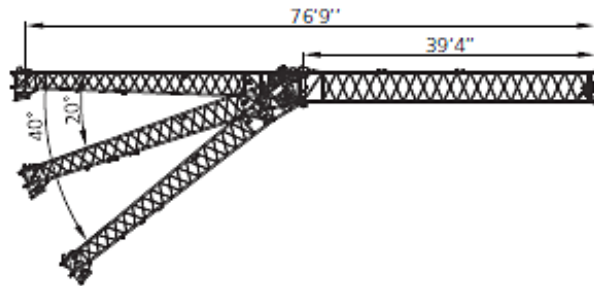
VA



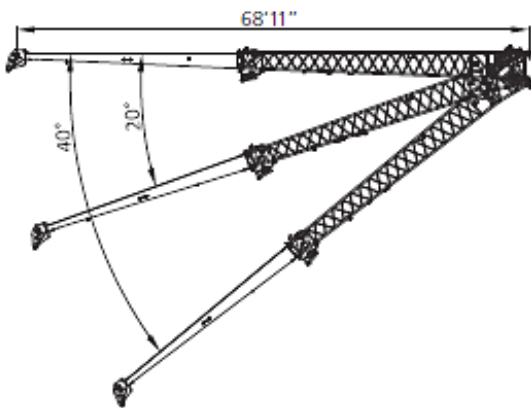
HAV-VA 108.3 ft



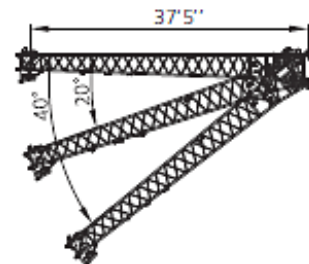
HAV-VA 75.5 ft



HAV 68.9 ft



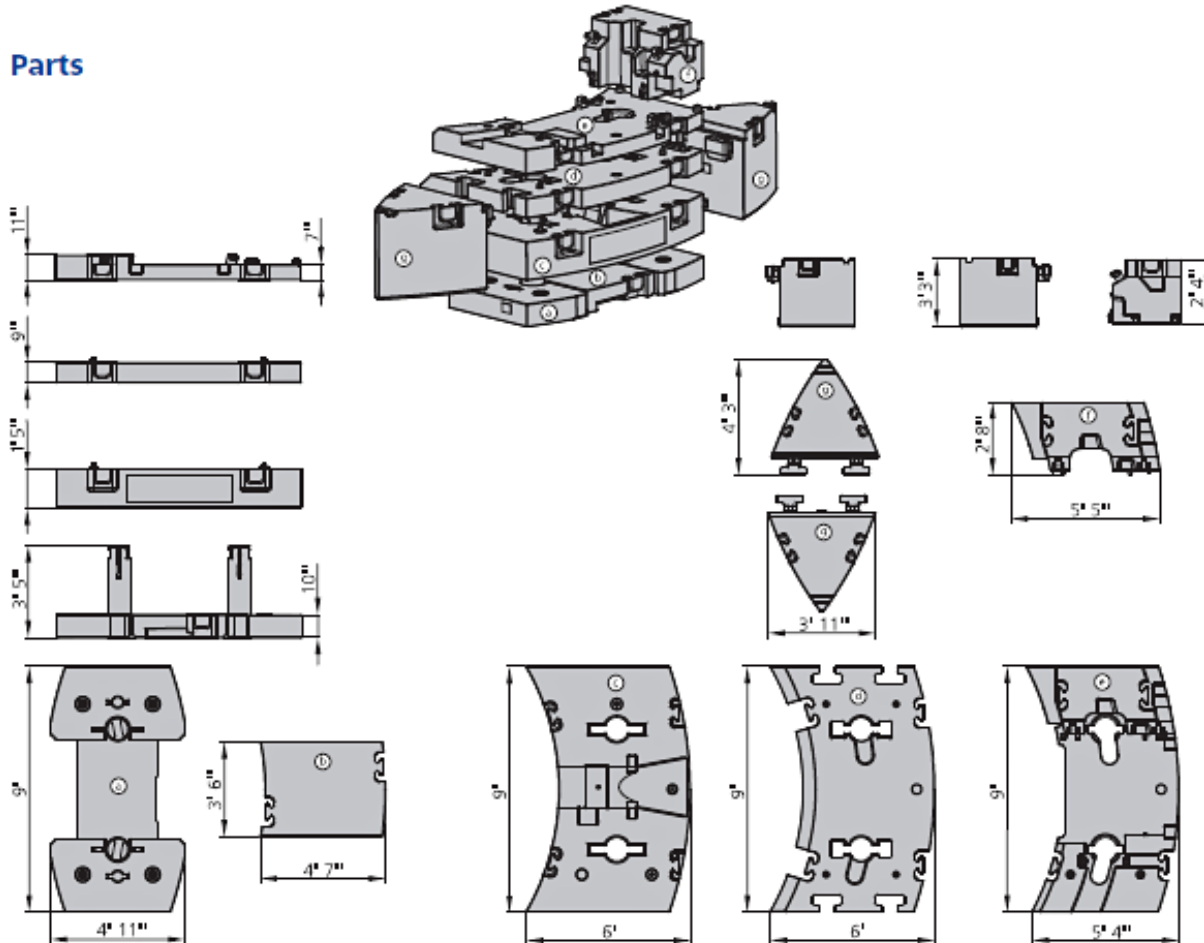
HAV 37.4 ft



COUNTERWEIGHT

HA = Main Boom HAV = Folding Swing-away Jib HAV-VA= Variable Extension with Jib MS= Runner

Parts

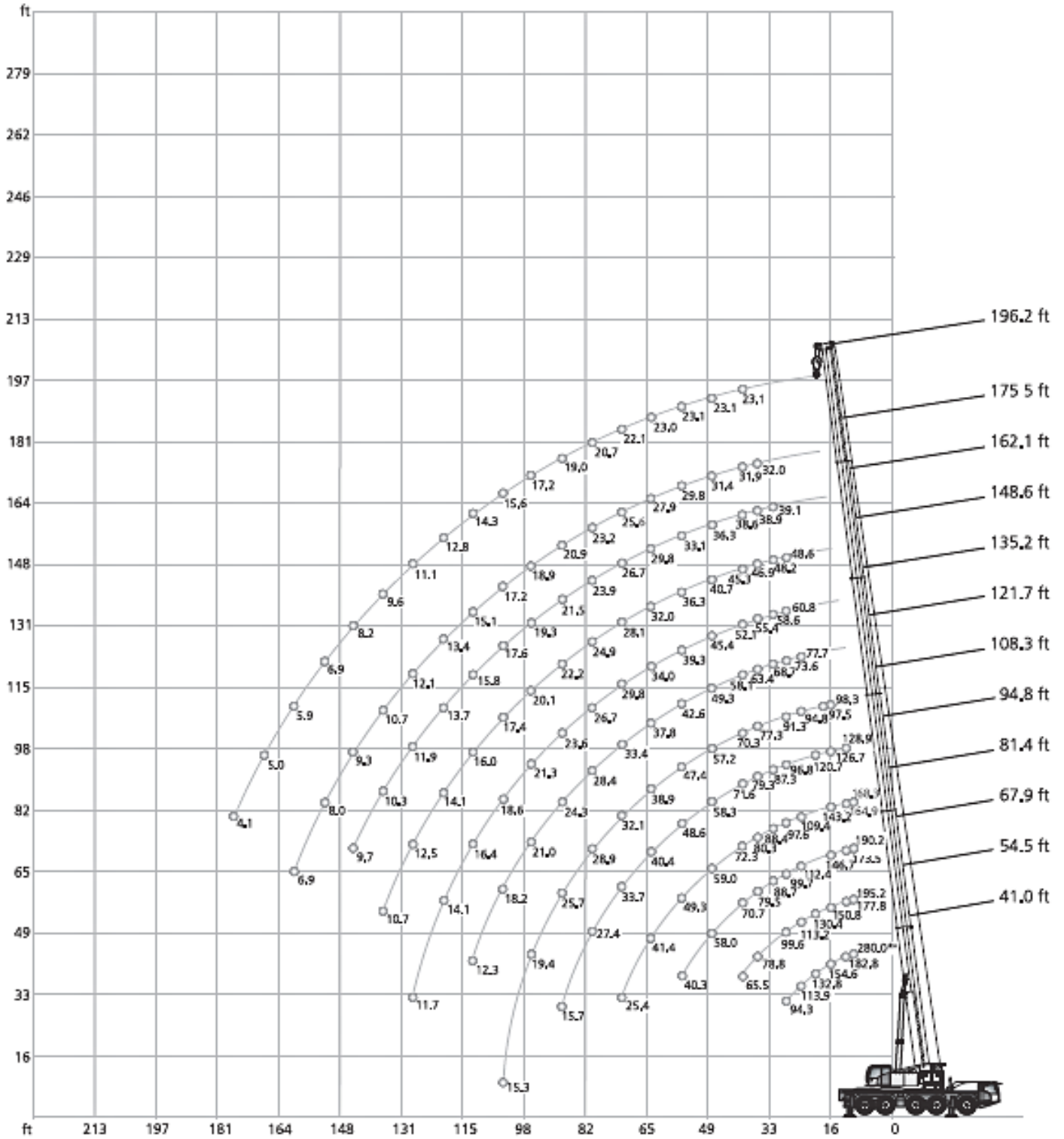


Configurations

	Ⓐ 10,800 lb	Ⓑ 4,630 lb	Ⓒ 24,260 lb	Ⓓ 11,910 lb	Ⓔ 9,920 lb	Ⓕ 8,200 lb	Ⓖ 11,690 lb	Ⓗ 11,690 lb
0 lb								
8,200 lb						X		
10,800 lb	X							
15,400 lb	X	X						
18,100 lb					X	X		
19,000 lb	X					X		
23,600 lb	X	X				X		
28,900 lb	X				X	X		
33,500 lb	X	X			X	X		
39,700 lb	X	X	X					
47,800 lb	X	X	X			X		
51,600 lb	X	X	X	X				
57,800 lb	X	X	X		X	X		
59,800 lb	X	X	X	X		X		
61,500 lb	X	X	X	X	X			
69,700 lb	X	X	X	X	X	X		
84,900 lb	X	X	X	X	X		X	X
93,000 lb	X	X	X	X	X	X	X	X

MAIN BOOM

HA = Main Boom HAV = Folding Swing-away Jib HAV-VA= Variable Extension with Jib MS= Runner



MAIN BOOM

HA = Main Boom HAV = Folding Swing-away Jib HAV-VA= Variable Extension with Jib MS= Runner

93,000 lb		25.3 ft x 23.0 ft		360°		ASME B30.5								
ft	41.0 ft*	41.0 ft	54.5 ft	67.9 ft	81.4 ft	94.8 ft	108.3 ft	121.7 ft	135.2 ft	148.6 ft	162.1 ft	175.5 ft	196.2 ft	ft
1,000 lb														
8	280.0**	-	-	-	-	-	-	-	-	-	-	-	-	8
10	200.7	200.7	195.2	190.2	168.3	-	-	-	-	-	-	-	-	10
12	182.8	182.6	177.8	173.5	164.9	128.9	-	-	-	-	-	-	-	12
14	167.6	166.5	163.2	159.0	155.4	128.0	-	-	-	-	-	-	-	14
16	154.6	151.9	150.8	146.7	143.2	126.7	98.3	-	-	-	-	-	-	16
18	143.4	140.0	140.3	136.7	133.3	124.2	97.5	-	-	-	-	-	-	18
20	132.8	129.1	130.4	127.3	124.0	120.7	96.7	79.3	-	-	-	-	-	20
24	113.9	111.7	113.2	112.4	109.4	108.4	94.8	77.7	61.6	-	-	-	-	24
28	94.3	94.2	99.6	99.7	97.6	96.8	91.3	73.6	60.8	48.6	-	-	-	28
32	-	-	88.5	88.7	88.4	87.3	84.5	68.7	58.6	48.2	39.1	-	-	32
36	-	-	78.8	79.5	80.3	79.3	77.3	63.4	55.4	46.9	38.9	32.0	-	36
40	-	-	65.5	70.7	72.3	71.6	70.3	58.1	52.1	45.3	38.6	31.9	23.1	40
48	-	-	-	58.0	59.0	58.3	57.2	49.3	45.4	40.7	36.3	31.4	23.1	48
56	-	-	-	40.3	49.3	48.6	47.4	42.6	39.3	36.3	33.1	29.8	23.1	56
64	-	-	-	-	41.4	40.4	38.9	37.8	34.0	32.0	29.8	27.9	23.0	64
72	-	-	-	-	25.4	33.7	32.1	33.4	29.8	28.1	26.7	25.6	22.1	72
80	-	-	-	-	-	27.4	28.9	28.4	26.7	24.9	23.9	23.2	20.7	80
88	-	-	-	-	-	15.7	25.7	24.3	23.6	22.2	21.5	20.9	19.0	88
96	-	-	-	-	-	-	19.4	21.0	21.3	20.1	19.3	18.9	17.2	96
104	-	-	-	-	-	-	15.3	18.2	18.6	17.4	17.6	17.2	15.6	104
112	-	-	-	-	-	-	-	12.3	16.4	16.0	15.8	15.1	14.3	112
120	-	-	-	-	-	-	-	-	14.1	14.1	13.7	13.4	12.8	120
128	-	-	-	-	-	-	-	-	11.7	12.5	11.9	12.1	11.1	128
136	-	-	-	-	-	-	-	-	-	10.7	10.3	10.7	9.6	136
144	-	-	-	-	-	-	-	-	-	-	9.7	9.3	8.2	144
152	-	-	-	-	-	-	-	-	-	-	-	8.0	6.9	152
160	-	-	-	-	-	-	-	-	-	-	-	6.9	5.9	160
168	-	-	-	-	-	-	-	-	-	-	-	-	5.0	168
176	-	-	-	-	-	-	-	-	-	-	-	-	4.1	176
1)	34.6	34.6	25.1	19.4	15.0	11.9	9.0	7.1	4.9	2.9	-	-	-	1)

1) Capacities with Horizontal boom

*Over Rear

**Capacity Class

MAIN BOOM

HA = Main Boom HAV = Folding Swing-away Jib HAV-VA= Variable Extension with Jib MS= Runner

57,800 lb		25.3 ft x 23.0 ft				360° / Max.*				ASME B30.5			
ft	360°	Max.	360°	Max.	360°	Max.	360°	Max.	360°	Max.	360°	Max.	ft
	41.0 ft	41.0 ft	54.5 ft	54.5 ft	67.9 ft	67.9 ft	81.4 ft	81.4 ft	94.8 ft	94.8 ft	108.3 ft	108.3 ft	
1,000 lb													
10	200.6	200.7	195.2	195.2	190.2	190.2	168.3	168.3	-	-	-	-	10
12	180.7	182.6	177.8	177.9	173.5	173.5	164.9	164.9	128.9	128.9	-	-	12
14	163.8	166.5	163.2	163.2	159.0	159.0	155.4	155.4	128.0	128.0	-	-	14
16	149.5	151.9	150.6	150.8	146.7	146.7	143.2	143.2	126.7	126.7	-	-	16
18	137.8	140.0	139.3	140.3	136.7	136.7	133.3	133.3	124.2	124.2	98.3	98.3	18
20	126.9	129.1	128.5	130.4	127.3	127.3	124.0	124.0	120.7	120.7	96.7	96.7	20
24	108.9	111.7	110.8	113.2	110.9	112.3	108.9	109.4	108.4	108.4	94.8	94.8	24
28	92.1	94.2	94.6	98.3	94.9	98.5	95.4	97.0	95.5	96.8	91.0	91.3	28
32	-	-	81.8	84.6	82.0	84.7	83.7	86.1	82.9	85.3	80.4	83.7	32
36	-	-	70.4	74.2	71.0	74.3	72.6	75.9	71.7	75.1	69.2	74.0	36
40	-	-	54.1	60.7	62.2	67.0	61.9	66.6	61.0	65.7	59.1	64.6	40
48	-	-	-	-	46.6	53.8	46.3	53.6	45.3	52.9	44.6	51.6	48
56	-	-	-	-	34.2	37.9	36.0	44.4	35.4	43.6	36.6	42.2	56
64	-	-	-	-	-	-	29.0	37.1	30.1	36.2	29.3	34.9	64
72	-	-	-	-	-	-	25.4	25.4	25.0	30.5	24.1	31.6	72
80	-	-	-	-	-	-	-	-	21.1	25.6	21.0	27.1	80
88	-	-	-	-	-	-	-	-	15.7	15.7	18.3	23.4	88
96	-	-	-	-	-	-	-	-	-	-	15.9	18.6	96
104	-	-	-	-	-	-	-	-	-	-	13.9	15.3	104
1)	34.6	34.6	25.1	25.1	19.4	19.4	15.0	15.0	11.9	11.9	9.0	9.0	1)

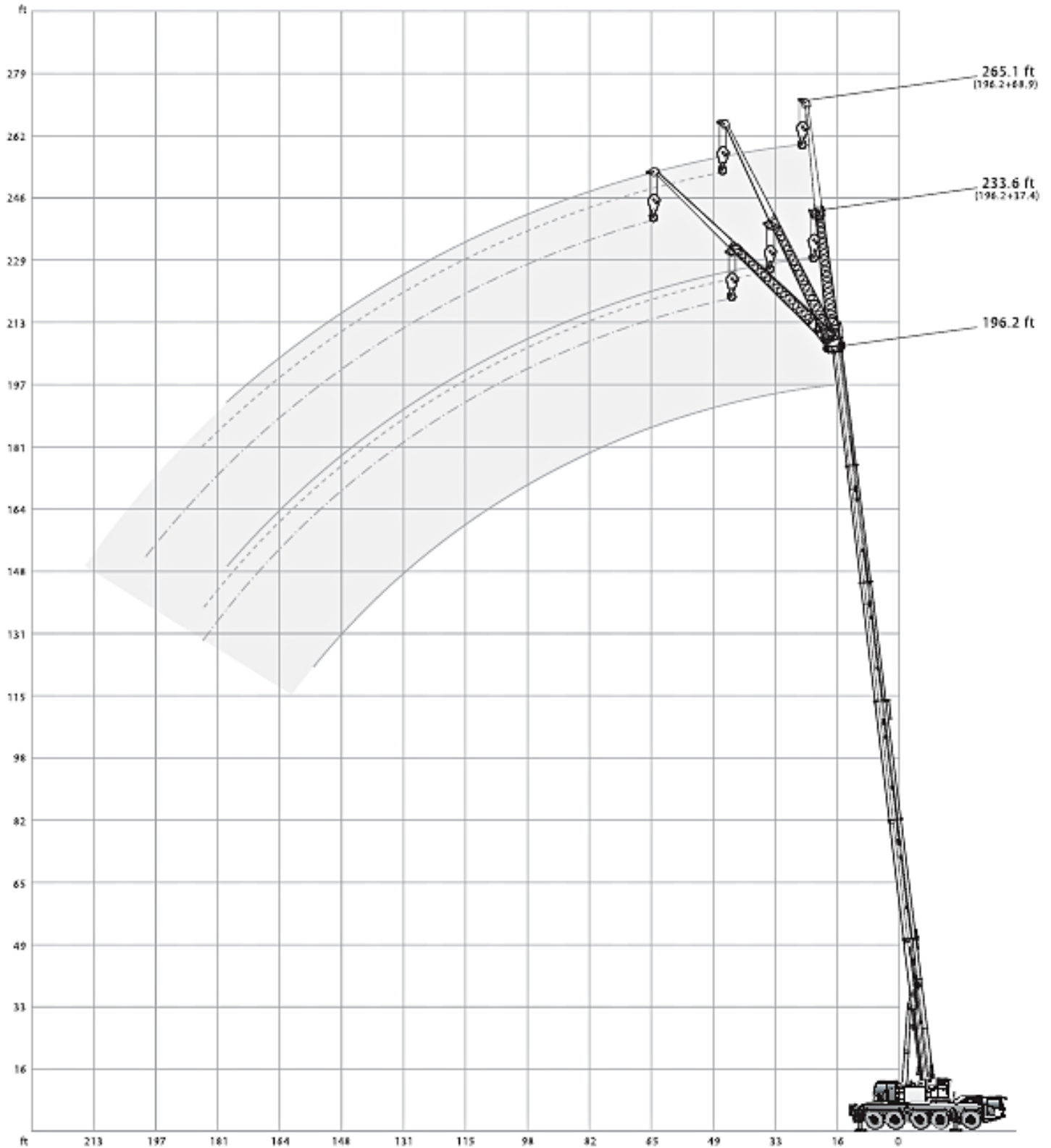
ft	360°	Max.	360°	Max.	360°	Max.	360°	Max.	360°	Max.	360°	Max.	ft
	121.7 ft	121.7 ft	135.2 ft	135.2 ft	148.6 ft	148.6 ft	162.1 ft	162.1 ft	175.5 ft	175.5 ft	196.2 ft	196.2 ft	
1,000 lb													
20	79.3	79.3	-	-	-	-	-	-	-	-	-	-	20
24	77.7	77.7	61.6	61.6	-	-	-	-	-	-	-	-	24
28	73.6	73.6	60.8	60.8	48.6	48.6	-	-	-	-	-	-	28
32	68.7	68.7	58.6	58.6	48.2	48.2	39.1	39.1	-	-	-	-	32
36	62.9	63.4	55.4	55.4	46.9	46.9	38.9	38.9	32.0	32.0	-	-	36
40	56.6	58.1	51.9	52.1	45.3	45.3	38.6	38.6	31.9	31.9	23.1	23.1	40
48	45.2	49.3	42.2	45.4	40.2	40.7	36.3	36.3	31.4	31.4	23.1	23.1	48
56	34.9	41.9	34.2	39.3	33.2	36.3	32.4	33.1	29.8	29.8	23.1	23.1	56
64	28.6	36.1	28.6	33.9	27.5	32.0	27.5	29.8	26.9	27.9	23.0	23.0	64
72	24.4	30.5	23.3	29.2	23.9	28.1	22.8	26.7	23.0	25.6	21.9	22.1	72
80	20.4	25.8	20.4	25.5	20.0	24.4	19.8	23.8	19.1	23.2	18.0	20.7	80
88	17.4	22.1	17.4	22.5	16.9	21.4	16.9	21.2	16.0	20.9	14.9	19.0	88
96	15.3	19.7	15.1	19.6	14.2	18.8	14.2	19.0	13.3	18.5	12.2	17.2	96
104	13.4	18.1	12.8	17.1	11.9	17.0	11.9	16.6	11.1	16.0	10.0	15.6	104
112	11.6	12.3	10.9	14.9	10.0	14.9	10.0	14.2	9.2	14.4	8.1	13.6	112
120	-	-	9.4	13.3	8.5	13.4	8.5	12.4	7.6	12.6	6.5	11.7	120
128	-	-	8.0	11.7	7.2	11.9	7.2	11.2	6.2	11.0	5.2	10.1	128
136	-	-	-	-	6.0	10.1	6.0	10.3	4.9	9.6	4.0	8.7	136
144	-	-	-	-	-	-	4.9	9.3	4.0	8.4	2.9	7.5	144
152	-	-	-	-	-	-	-	-	3.0	7.4	-	6.3	152
160	-	-	-	-	-	-	-	-	-	6.4	-	5.4	160
168	-	-	-	-	-	-	-	-	-	-	-	4.5	168
176	-	-	-	-	-	-	-	-	-	-	-	3.8	176
1)	7.1	7.1	4.9	4.9	2.9	2.9	-	-	-	-	-	-	1)

1) Capacities with Horizontal boom

*Max. values are only valid for specific superstructure positions

FOLD SWING-AWAY JIB

HA = Main Boom HAV = Folding Swing-away Jib HAV-VA= Variable Extension with Jib MS= Runner



FOLD SWING-AWAY JIB

HA = Main Boom HAV = Folding Swing-away Jib HAV-VA= Variable Extension with Jib MS= Runner

93,000 lb		25.3 ft x 23.0 ft		360°		ASME B30.5							
41.0 ft				108.3 ft									
ft	37.4 ft			68.9 ft			ft	37.4 ft			68.9 ft		
	0°	20°	40°	0°	20°	40°		0°	20°	40°	0°	20°	40°
	1,000 lb												
10	36.6	-	-	22.0	-	-	20	36.6	-	-	-	-	-
12	36.6	-	-	21.8	-	-	24	36.6	-	-	17.0	-	-
14	36.6	-	-	21.7	-	-	28	36.6	-	-	16.9	-	-
16	36.6	-	-	21.4	-	-	32	36.6	-	-	16.6	-	-
18	36.6	-	-	21.2	-	-	36	36.6	-	-	16.3	-	-
20	36.6	34.6	-	20.9	-	-	40	36.5	28.7	-	16.1	-	-
24	36.6	31.9	-	20.4	-	-	48	35.0	26.9	21.2	15.6	-	-
28	36.6	29.5	-	19.7	-	-	56	31.5	25.0	20.4	15.2	12.7	-
32	35.3	27.5	22.5	18.9	-	-	64	28.4	23.3	19.7	14.7	11.8	-
36	32.6	25.8	21.5	17.9	-	-	72	25.8	21.6	19.2	14.3	11.3	-
40	29.9	24.3	20.6	16.8	13.6	-	80	23.8	20.3	18.6	13.8	10.7	9.0
48	25.8	21.7	19.3	14.9	12.3	-	88	22.2	19.3	17.9	13.0	10.2	8.7
56	22.5	19.9	18.6	13.2	11.2	9.7	96	20.7	18.3	17.4	12.1	9.6	8.5
64	19.9	18.9	-	11.7	10.3	9.1	104	18.4	17.5	17.0	11.3	9.3	8.2
72	-	-	-	10.6	9.5	8.6	112	16.0	16.6	16.6	10.8	9.0	8.1
80	-	-	-	9.8	9.0	8.3	120	14.0	14.5	-	10.0	8.8	7.9
88	-	-	-	9.1	8.5	8.2	128	12.7	12.8	-	9.6	8.5	7.9
96	-	-	-	8.5	8.2	-	136	7.6	7.6	-	9.2	8.2	7.9
							144	-	-	-	8.8	8.2	7.9
							152	-	-	-	8.6	8.2	-
							160	-	-	-	8.0	7.9	-

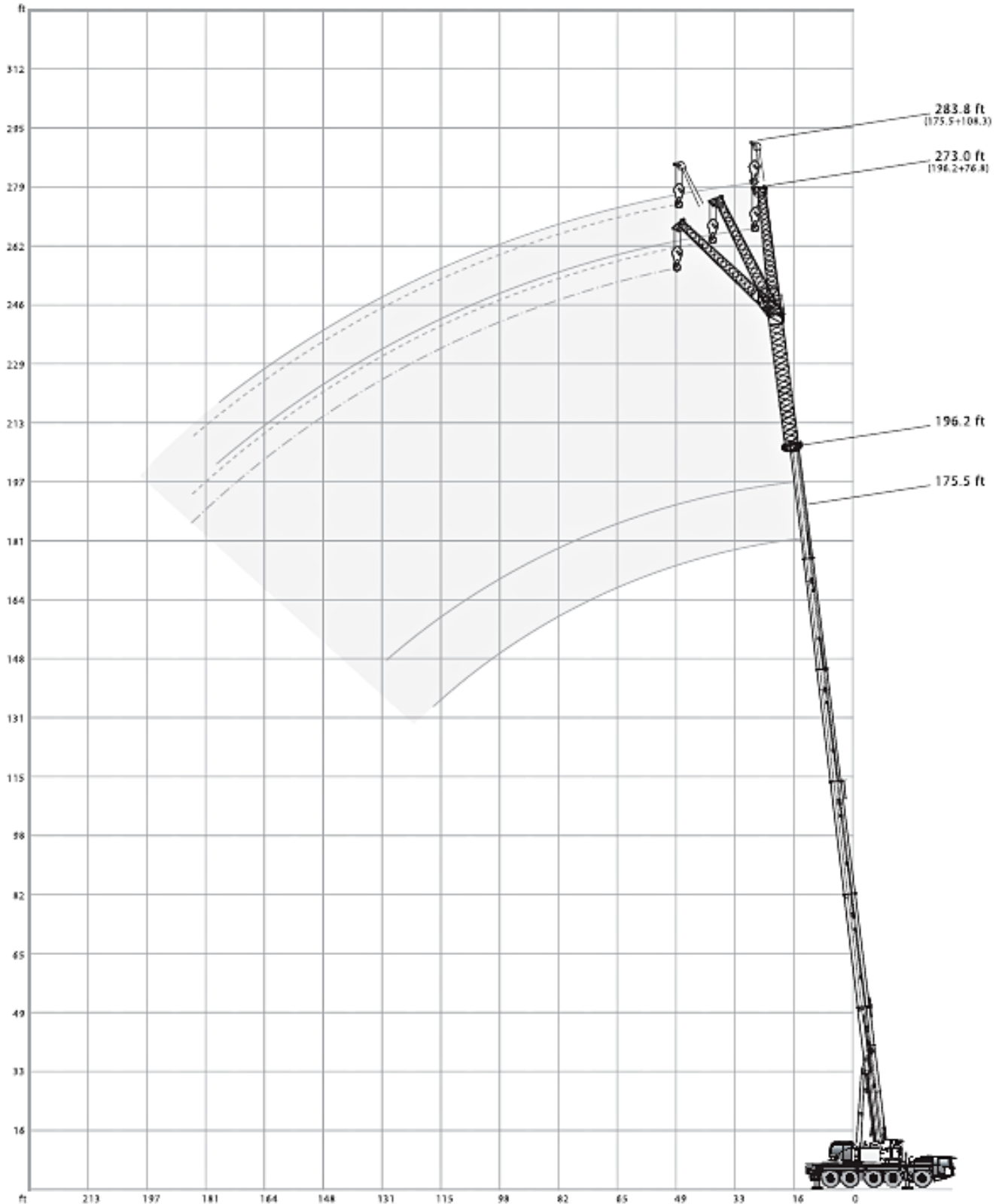
175.5 ft						
ft	37.4 ft			68.9 ft		
	0°	20°	40°	0°	20°	40°
	1,000 lb					
40	16.1	-	-	-	-	-
48	16.1	-	-	9.0	-	-
56	16.1	-	-	9.0	-	-
64	16.1	16.1	-	9.0	-	-
72	16.1	16.1	-	9.0	-	-
80	16.1	16.0	15.5	9.0	9.0	-
88	15.6	15.1	14.5	9.0	9.0	-
96	14.7	14.1	13.8	9.0	9.0	-
104	13.8	13.3	13.1	9.0	9.0	8.2
112	12.7	12.3	12.3	9.0	9.0	8.1
120	11.9	11.5	11.5	8.8	8.7	7.9
128	10.7	10.8	10.8	8.5	8.3	7.8
136	9.3	9.9	10.1	8.2	7.8	7.6
144	8.4	8.7	9.1	7.7	7.5	7.3
152	7.4	7.8	7.9	6.9	7.0	7.0
160	6.3	6.9	7.2	6.0	6.7	6.5
168	5.3	5.9	6.1	5.3	5.9	6.1
176	4.5	5.0	5.0	4.5	5.1	5.6
184	3.7	4.0	-	3.7	4.5	4.8
192	-	-	-	-	3.8	4.2
200	-	-	-	-	3.0	3.4

196.2 ft						
ft	37.4 ft			68.9 ft		
	0°	20°	40°	0°	20°*	40°*
	1,000 lb					
48	11.7	-	-	-	-	-
56	11.7	-	-	6.6	-	-
64	11.7	-	-	6.6	-	-
72	11.7	11.7	-	6.6	-	-
80	11.7	11.7	11.7	6.6	-	-
88	11.7	11.7	11.7	6.6	7.1	-
96	11.7	11.7	11.7	6.6	7.1	-
104	11.7	11.7	11.7	6.6	7.1	-
112	11.4	11.4	11.4	6.6	7.1	7.1
120	10.7	10.8	10.7	6.6	7.1	7.1
128	10.0	10.0	10.1	6.6	7.1	7.1
136	8.9	9.4	9.4	6.6	7.1	7.1
144	7.6	8.4	8.6	6.6	6.8	6.6
152	6.2	7.1	7.5	6.2	6.5	6.4
160	5.2	5.8	6.3	5.2	6.1	6.1
168	4.2	4.8	5.2	4.2	5.6	5.8
176	3.4	3.9	4.1	3.4	4.7	5.3
184	-	3.1	3.3	-	3.9	4.5
192	-	-	-	-	-	3.6
200	-	-	-	-	-	2.8

*191.6 ft

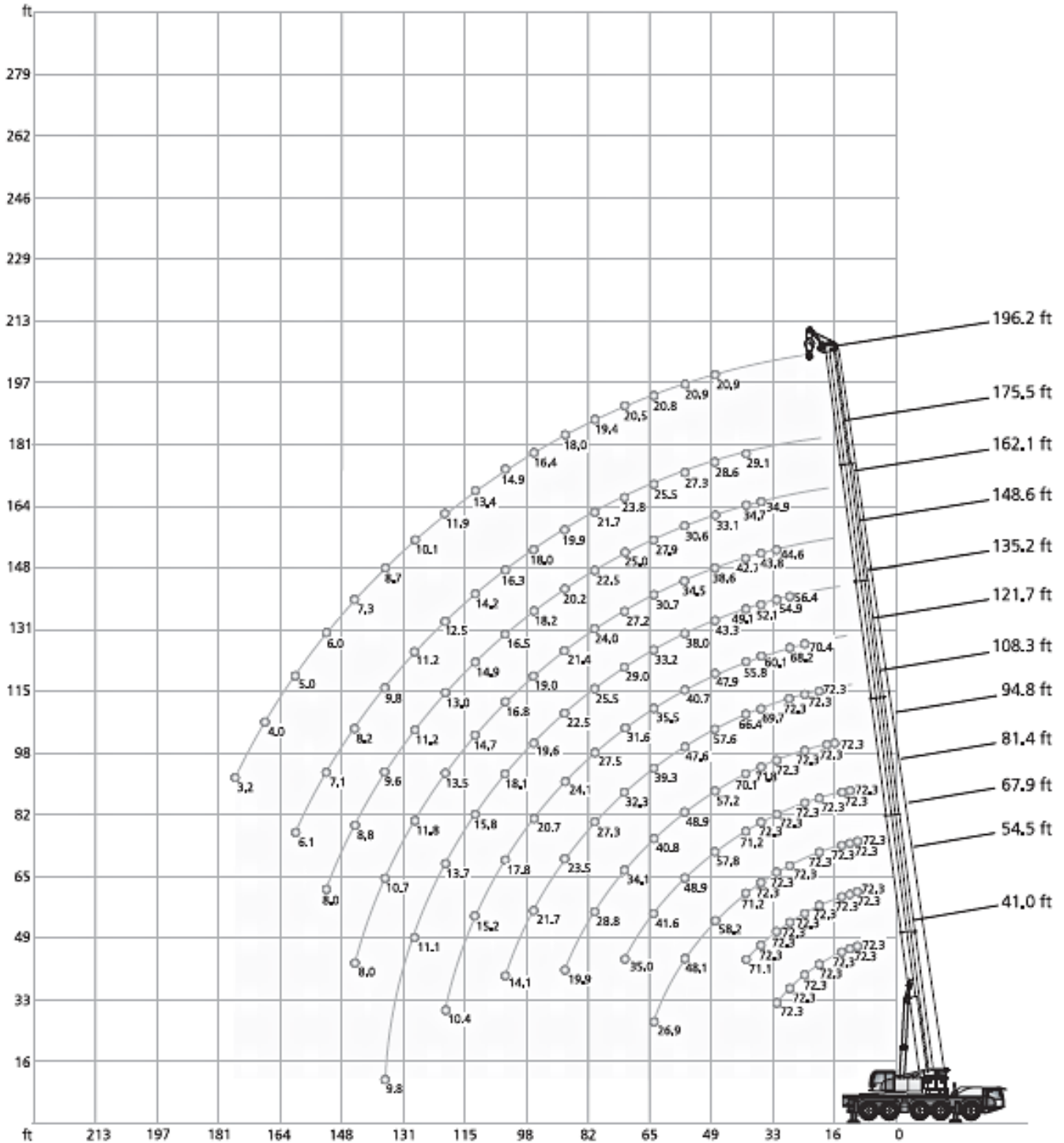
VARIABLE EXTENSION WITH JIB

HA = Main Boom HAV = Folding Swing-away Jib HAV-VA= Variable Extension with Jib MS= Runner



RUNNER

HA = Main Boom HAV = Folding Swing-away Jib HAV-VA= Variable Extension with Jib MS= Runner



TECHNICAL DESCRIPTION - BASIC MACHINE

Engine 368-4

Scania DC13 Diesel Engine, 368 kw/2100/min (500 HP), torque 2373 NM/ 1300/min

Euromot 4 / Tier 4F

The engine complies with Euromot 4/Tier 4F; exhaust system is 100% stainless steel.

Axles 10x6x10

5 axles; Axles 2,4,5 are driven and dispose of a selectable transverse lock. Axles 4 with a longitudinal lock as all axles are steered.

Fuel Tank

127 gallons; (no RME / biodiesel).

Suspension / Steering

Hydropneumatic suspension with axle load compensation; Hydraulically lockable. Also includes dual-circuit steering system with independent rear axle steering.

Brakes

Pneumatic dual circuit service brake, acting on all wheels; Disc brakes; Hydraulic retarder integrated into transmission as wear-free sustained-action brake; Additional exhaust brake; Parking brake.

Tires / Drive Lights

385/95 R25 (14.00R25); Steel Rim 9,5-25/1,7"; Magna MA03 170F or similar. Includes low and high beam, daytime operating lights.

EQUIPMENT SUPERSTRUCTURE

EQUIPMENT CARRIER



Air conditioning and heating for carrier and crane cabs with 7 KW rated cooling and 12 kW heating power.

Telescopic Boom

41 ft. - 196.2 ft.; Single cylinder telescoping system, automatic telescoping. Includes attachments for all equipment and extensions; 4 sheaves integrated in boom head for max capacity of 141,800 lb.

Rotary Drive / H1

Single slewing gear unit and Hoist with spring-loaded multi-disc brake that comes with different operating modes.

Control System

Enabling 4 simultaneous working movements; Electric pilot controls via 2 axis joysticks. (Different modes are selectable for hydraulic circuits.)

Operator Assist

IC-1, with integrated electronic load moment indicator in accordance with EN13000; Color Display, current operating conditions, load charts, and fault indicator. Also includes: signal lights indicator and crane data log.

Crane Cab

S-SPACE type 875 with sliding rear window, fold out front window, extendable side pedestal, handrails, and tinted safety glass.

ERGONOMIC STYLING & DESIGN



The new generation of design supports the fact that this all terrain crane is a maneuverable workhorse that can be utilized for different kinds of lifts in a wide variety of situations. Its drivability, operator comfort and control, maintenance, and maximum performance capabilities, continue to exceed expectations worldwide.

TECHNICAL DESCRIPTION - ADDITIONAL EQUIPMENT

Engine 331-3a

Scania DC13 Diesel Engine, 331 kw/2100/min (450 HP), torque 2007 NM/ 1575/min

Euromot 3a / Tier 3

The engine complies with Euromot 3a/Tier 3; exhaust system is optional with spark arrester.

Axles 10x8x10

Axles 1,2,4,5 are driven and dispose of a selectable transverse lock. Axles 2 and 4 are driven with a disengageable center-differential lock as all axles are steered.

Additional Fuel Tank

Additional tank is 37 gallons; For 164 diesel total in carrier (no RME / biodiesel).

SUPERSTRUCTURE

Remote Control

All superstructure movements are controlled remotely by device.

Outrigger and Load Indicator

The outrigger load is indicated in the operator cab and outrigger control box.

Working Range Limiter (IC-1 Plus)

IC-1Plus is a smart crane control system enabling higher lifting capacities especially over outriggers. It enables safe use of the full capacity of the crane, even in asymmetric configurations as outriggers can be positioned independently. Provided with graphical lift planning application and in-cab simulation.

CARRIER



Air conditioning for carrier and crane cabs with 7 KW rated cooling.

S1 Heavy Lift Attachment

2 additional, connectable sheaves; For total 6sheaves at boom head- max capacity: 202,400 lb.

Holst (H2)

2 Holst; Spring-loaded multi-disc brake; Integrated resolver; quick couplings and transport rack; Rope twist prevention is not included.

Additional Counterweight

Additional Counterweight: 23,400 lb. for two pieces. Total is 93,100 lb. for 8 pieces.

HANDLING



Displaying and programming of the work range limits by IC-1 Plus.